



♩ = 124

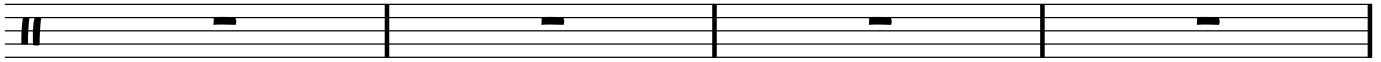
# DON'T START NOW - DUA LIPA

(DRUMSET VERSION)

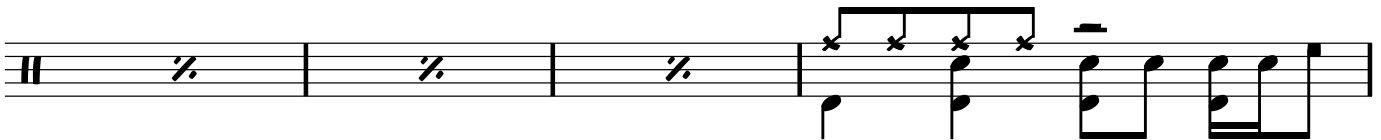
ARRANGEMENT: BENEDIKT BASSMIR

LEVEL 3

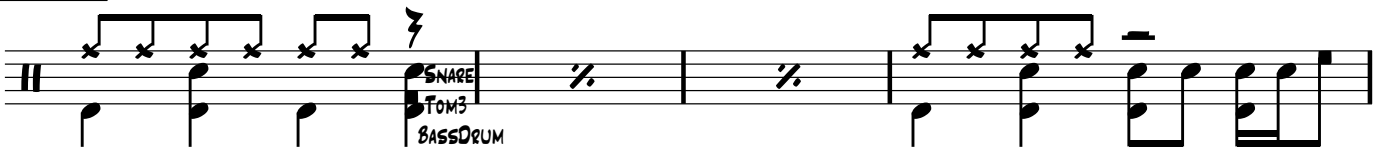
## INTRO



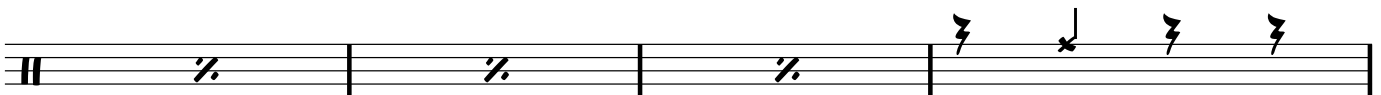
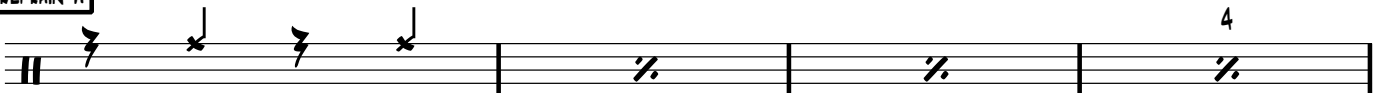
## STROPHE



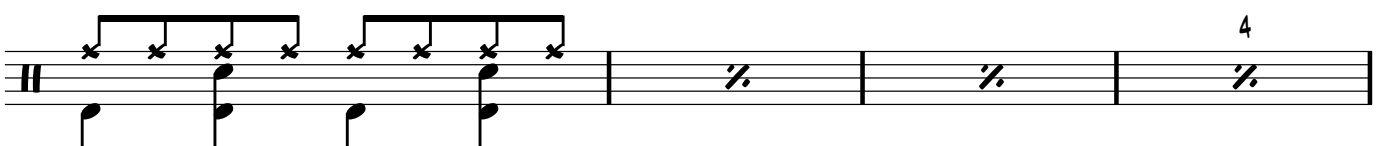
## PRE CHORUS



## REFRAIN A



## REFRAIN B



BRIDGE

The Bridge section consists of two staves of guitar tablature. Each staff begins with a double bar line and a key signature of one sharp (F#). The notation includes rhythmic markings such as 'x' for fretted notes and vertical stems for accents. The first staff contains 12 measures, and the second staff contains 12 measures. The piece concludes with a final chord and a double bar line.

REFRAIN A

Refrain A consists of two staves of guitar tablature. The first staff has four measures, with the first two containing rhythmic markings and the last two containing a percentage symbol (%). A measure number '4' is written above the final measure. The second staff has four measures, with the first containing a rhythmic marking and the remaining three containing rests.

REFRAIN B

Refrain B consists of two staves of guitar tablature. Each staff has four measures, with the first two containing rhythmic markings and the last two containing a percentage symbol (%). The notation includes fretted notes and chord diagrams.

ENDE

The Ende section consists of two staves of guitar tablature. Each staff has 12 measures, with rhythmic markings and chord diagrams throughout. The piece concludes with a final chord and a double bar line.