

♩ = 124

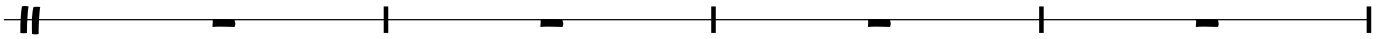
DON'T START NOW - DUA LIPA (SNARE VERSION)



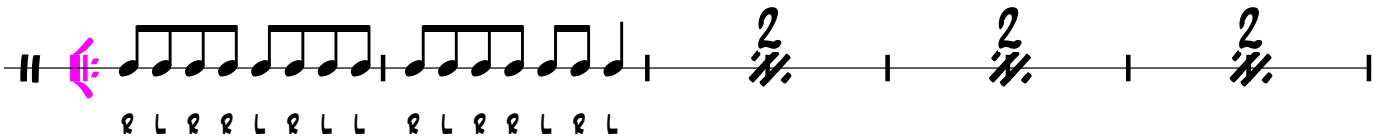
LEVEL 3

ARRANGEMENT: BENEDIKT BASSMIR

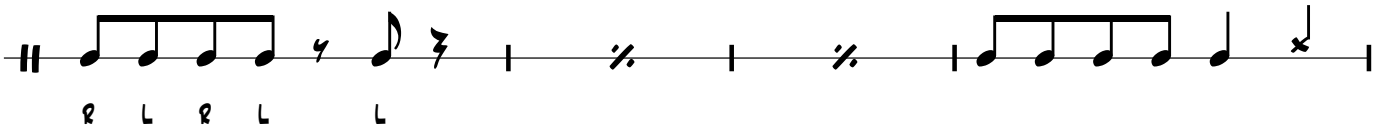
INTRO



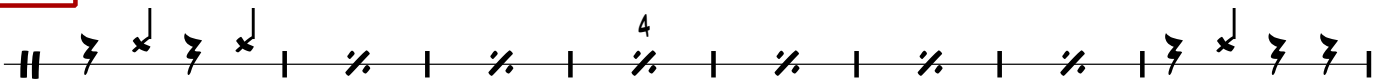
STROPHE



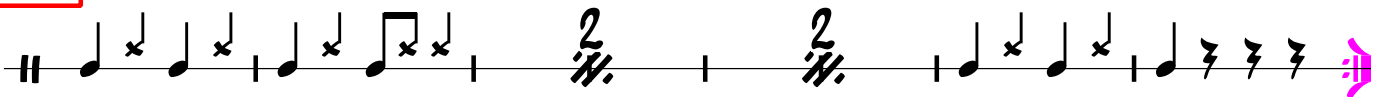
PRE CHORUS



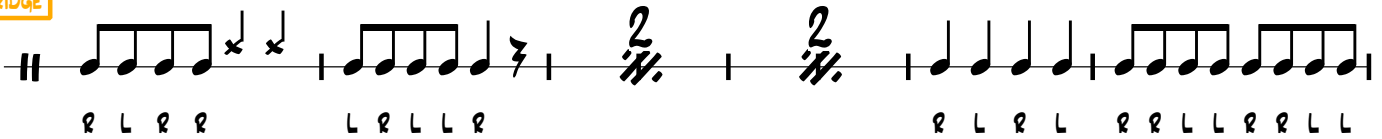
REFRAIN A



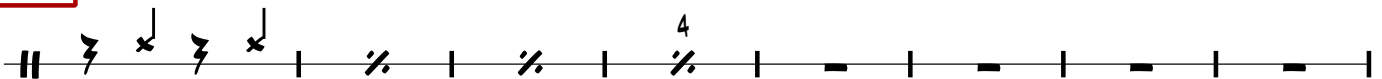
REFRAIN B



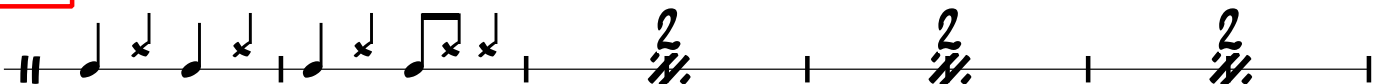
BRIDGE



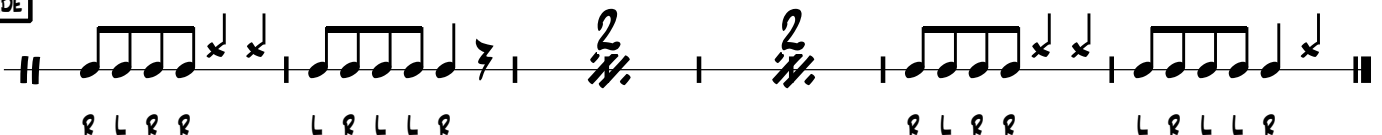
REFRAIN A



REFRAIN B



ENDE



NOTEN ERKLÄRUNG

The image shows four horizontal musical staves illustrating different drum notation symbols and their meanings:

- Staff 1:** Shows four symbols on a staff: a snare note (quarter note), a stick note (quarter note with an 'x' above it), a quarter rest (quarter note with a diagonal slash), and an eighth rest (quarter note with a '4' above it). Below the staff, the symbols are labeled: SNARE OHNE TEPPICH, STICKS ANEINANDER SCHLAGEN, VIERTELPAUSE, and ACHELPAUSE.
- Staff 2:** Shows a whole rest symbol (a thick horizontal bar) on a staff. Below it is the text: GANZE PAUSE (BIS 4 ZÄHLEN).
- Staff 3:** Shows two symbols on a staff: a repeat sign (two dots with a slash) and a double repeat sign (two dots with a slash and a '2' above it). Below the first symbol is the text: WIEDERHOLUNG (DEN SELBEN TAKT NOCHMAL SPIELEN). Below the second symbol is the text: DOPPELTE WIEDERHOLUNG (DIE LETZTEN BEIDEN TAKTE NOCHMAL SPIELEN).
- Staff 4:** Shows a large repeat sign (two dots with a slash and a vertical line) on a staff. Below it is the text: GROßE WIEDERHOLUNG (ALLES ZWISCHEN DEN ZWEI KLAMMERN WIRD NOCHMAL GESPIELT).